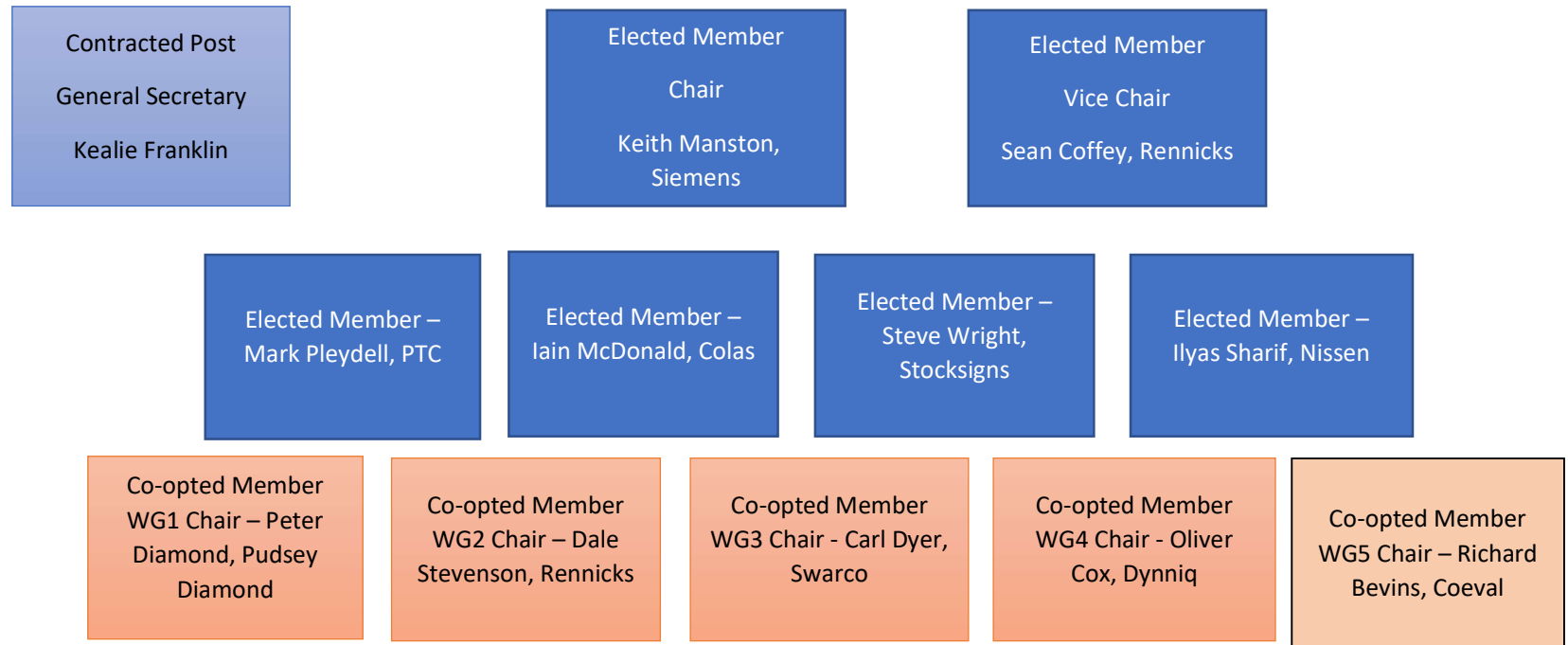


## THE EXECUTIVE COMMITTEE November 2021



Members are elected to the Executive Committee for a minimum three year period. The Chair and the Vice Chair are elected by the sitting Elected Members.

## EXTERNAL COMMITTEES – REPRESENTATIVES FOR ARTSM

### BSI UK Shadow Committees

<p>BSI EP/526 – Traffic Signals</p> <p>Dave Cousins</p> <p>Keith Manston</p> <p>BS EN 12352; BS EN 12368; BS EN 12675; BS EN 50293; BS EN 50556; DD CLC/TS 50509</p>	<p>B509/2 – Road Markings</p> <p>TBC</p> <p>BS 3262; BS 7962; BS EN 12802; BS EN 13197; BS EN 13212; BS EN 13459; BS EN 1423, BS EN 1424; BS EN 1436; BS EN 1463; BS EN 1790; BS EN 1824; BS EN 1871</p>	<p>BSI B509/3 – Construction of Road Traffic Signs</p> <p>Sean Coffey Phil Mitchell Hugh Barton Jurgen Ewald</p> <p>BS 8442; BS EN 12899; BS EN 13422</p>	<p>B509/10 – Breakaway Passive Safety</p> <p>Ian Thomas (Chair) Dave Franklin</p> <p>BS EN 12767</p>	<p>B509/11 – Road Vertical Signs &amp; VMS</p> <p>Dave Cousins, Swarco Chair Pete Hatherell, A Plant Ilyas Sharif (REMA)</p> <p>BS EN 12966</p>	<p>B509/12 – Autonomous Vehicles</p> <p>Mark Pleydell, PTC Kishan Ram, Mallatite</p> <p>Scope: To ensure consistency between road equipment and Automated vehicles.</p>
--	--	---	--	---	---

### Other UK Committees

<p>EPL 278 – ITS</p> <p>Kealie Franklin</p> <p>ISO TC WG 204</p> <p>CEN TC WG 278</p>	<p>National Highways Sector Scheme 9 – Design, Manufacturer, Assembly &amp; Provision of permanent road signs</p> <p>Kealie Franklin, Chair Mike Hope, Morelock Installations, Ian Thomas, Rennicks</p>	<p>National Highways Sector Scheme 8 – Overseeing, installation &amp; maintenance of highway electrical equipment and supporting works</p> <p>(proposed)</p>	<p>DfT Traffic Signs Working Party</p> <p>Kealie Franklin Dave Cousins (509/11)</p>	<p>TOPAS – Traffic Open Products &amp; Specifications</p> <p>25** Series Specifications</p> <p>Mark Pleydell, PTC Keith Manston, Siemens Dave Cousins, Swarco Peter Hutchinson, AGD</p>
---	---	--	---	---

Members are welcome to apply to the Executive to become members of external committees.